



Clicks  ft
solutions

BROCHURE



clicksoftsolutions.com



01

WHO ARE WE

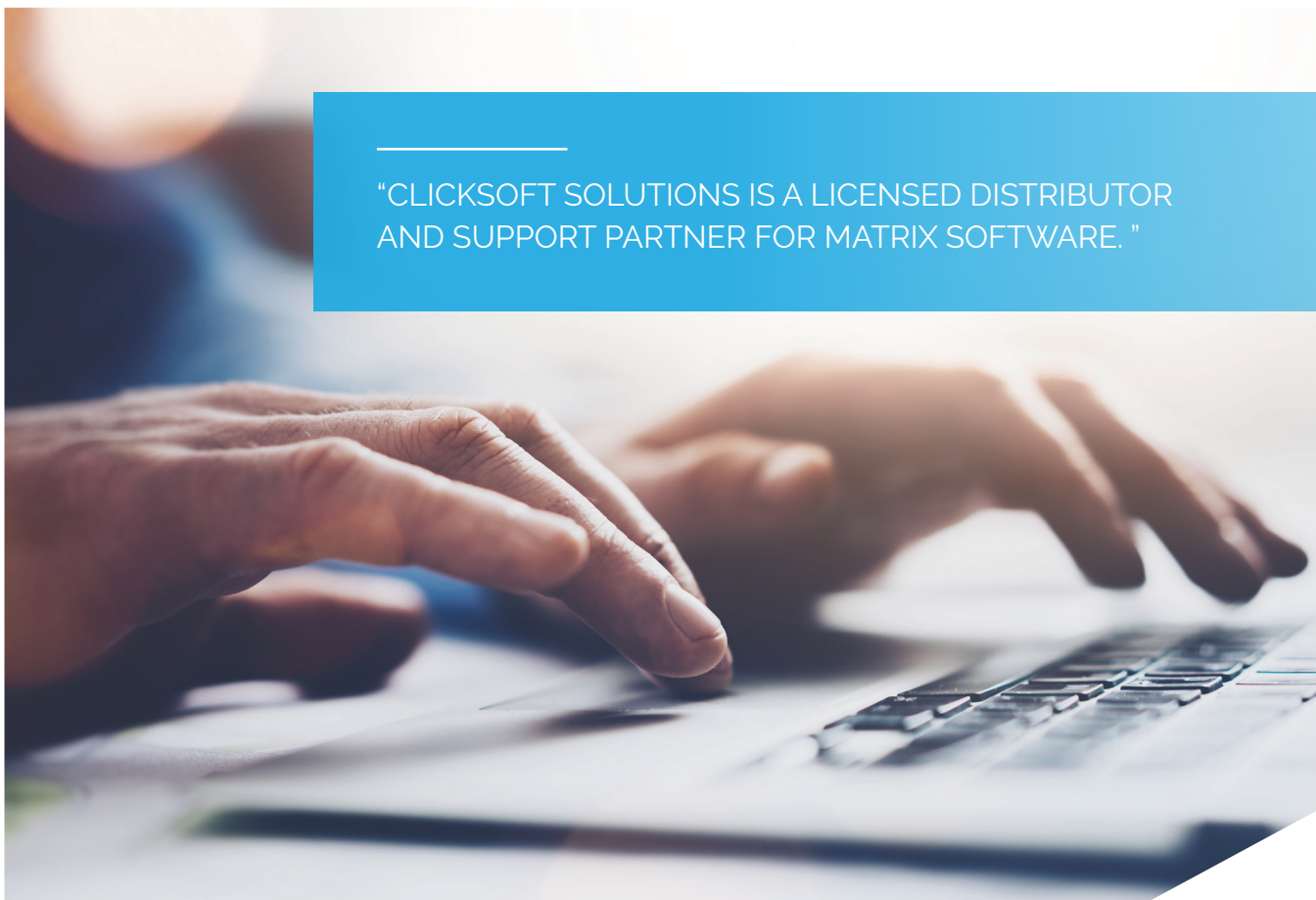
Clicksoft Solutions is a licensed distributor and support partner for Matrix Software. We offer Strategic Services to help businesses get the most out of their Matrix products. Our services include process-critical consulting, implementation and premier support.

At Clicksoft Solutions we know that the successful implementation of Software systems are dependent on user training and adoption. Therefore we also focus on change management during the implementation process providing your business with the tools and techniques to achieve actual business goals.

This approach includes organisational tools that can be utilised to assist individuals in making successful system transitions - resulting in the adoption and realisation of new technology.

Matrix software will:

- Organise your production information
- Provide more control on the product floor
- Measure efficiency
- Increase productivity and profitability
- Organise logistics



“CLICKSOFT SOLUTIONS IS A LICENSED DISTRIBUTOR AND SUPPORT PARTNER FOR MATRIX SOFTWARE.”

02

SOFTWARE WITH A DIFFERENCE



UNLIMITED USER LICENSING

There is no limit to the number of user licenses your business require. Unlike our competitors that bill you for every additional user license you may need, Meat Matrix includes all user licensing your business may require as a standard per site license. There is no hidden licensing cost and therefore maximises the value you get from using Matrix software.



FREE UPDATES

Unlike similar software packages on the market that require payment, all future software upgrades are included at no additional cost to Matrix Software customers. As the software evolves and improves, we believe that all our customers should benefit from what we learn. Meat Matrix customers will always have the latest available software technology at their fingertips.



NO LOCK IN CONTRACTS

Meat Matrix does not require any long-term lock-in contracts. We are so confident in our product and service that we let the customer decide whether or not they want to stay. No lock-in contract means better value for our customers and this drives Meat Matrix to deliver continuous improvement and results. We carry all the risk, not our customers.



SOFTWARE INTEGRATION

The system integrates with the following ERP and Financial applications: Sage • SAP • Accpac • Microsoft Dynamics Navisio Netsuite Pastel Evolution • Pastel Partner - All financial packages



NO UPFRONT COSTS

With Matrix Software you do not have to spend hundreds of thousands of dollars to purchase the software upfront. For a marginal amount you can license the use of the software on a month-to-month basis without any lock-in contracts.



LIMITED BUSINESS INTERRUPTION

Software implementations can be disruptive and time consuming. Therefore it is imperative that the planning and installation phase of the implementation is handled by an experienced service provider. With 15 years experience and more than 220 national and international implementations, Matrix software will make the transition to your new system efficient and painless.

03



USE OF EXISTING HARDWARE

Replacing the hardware infrastructure of a business is not only costly but interrupts operations. Meat Matrix technology is designed to function on most existing hardware infrastructures. Meat Matrix does not lock in customers to purchase hardware from us. In the case of additional hardware requirements, the customer gets to shop around for the best deal resulting in more savings.



LOW COST OF OWNERSHIP

Total cost of ownership (TCO) is a financial estimate intended to help buyers and owners determine the direct and indirect costs of a product or system. With no upfront purchase cost, Matrix software ranks at the top when it comes to cost of ownership, value for money and return on investment. Using the current IT infrastructure where possible and not dictating to our customers what hardware they are allowed to use significantly reduces cost.



LOW CUSTOMISATION COST

We recognise the fact that every customer's needs are unique. Customisation to accommodate your distinctive business requirements won't break the bank. Meat Matrix does not generate income from development work. We want to see that the software works best in your environment so all customisation is billed on a minimum per hour development basis as an additional service to our customers.



ADAPTS TO YOUR BUSINESS

The Meat Matrix team sets up software around the customer's requirements. All processing operations are unique in setup and scale. Customers do not need to change operations or factory layouts to accommodate an implementation. This limits disruption to business and saves cost.



INDUSTRY BEST PRACTICE

Matrix software is used in more than 220 international companies, with many of these ISO certified and exporting all over the world. Matrix software evolved to where it is today by incorporating best practise functionality in the software we develop.



24 HOUR SUPPORT

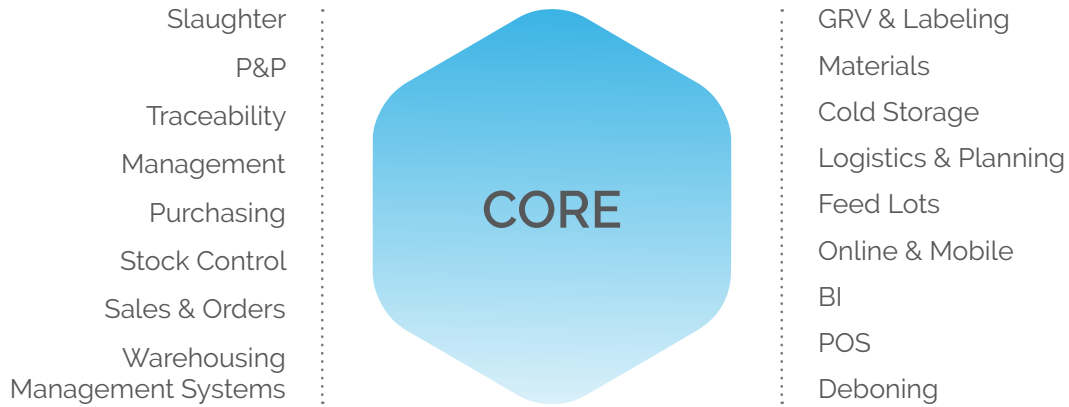
Meat Matrix has a local and international support team that enables us to provide our customers with 24/7 support - both onsite and online.



BUSINESS INTELLIGENCE INCLUDED

04

MEAT MATRIX MODULES



ALL CURRENT MODULES INCLUDED



INDUSTRY SPECIFIC

INDUSTRY STANDARDS



CUSTOMISABLE

FULLY INTEGRATED



CONTINUOUS IMPROVEMENT

“ WE PUT OUR CUSTOMERS' NEEDS FIRST. NOT ONLY DO YOU GET WORLDCLASS AFFORDABLE SOFTWARE, BUT YOU WILL PARTNER WITH A TEAM THAT PROVIDES THE BEST SOLUTION FOR YOUR BUSINESS. ”

A photograph of a cow in a field, overlaid with a white outline of a meat cut shape. The text 'MEAT MATRIX' is centered within an orange rectangular box that is part of the white outline.

**MEAT
MATRIX**

05

MEAT MATRIX

Less effort. More accuracy. More control.

Matrix Software specialises in market-leading processing software for meat, fish, food and beverage industries. With more than 9000 daily users in ten countries, Matrix Software offers unique factory floor solutions to some of the biggest names in the industry. Matrix Software customers range from small retail outlets to multi-site processing plants using more than 120 workstations.

The Matrix Software product suite includes Meat Matrix and Food Matrix. Both are must-have solutions for any industry where Stock Control, Yield Management, Traceability, Productivity and Cost Visibility are essential to control.

With our low customisation costs, there is no need to change your operations in order to suite a system – all solutions can be tailor-made to meet your specific needs and demands. Meat Matrix fully integrates with your current financial systems - allowing your business to continue with financial reporting with little or no interruption.

As part of the implementation process, Meat Matrix will use your existing hardware infrastructure, including full integration with current scales, probes, weighbridge and other process critical equipment.

Customers that benefit from Matrix solutions include feedlots, abattoirs (all species), meat processing plants, food processing plants (fish, poultry, sweets, beverages, veggies), wholesalers, butchereries, deboning plants and retail outlets.

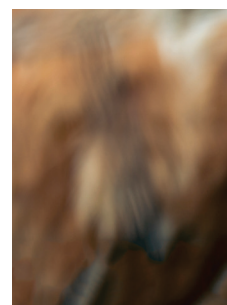
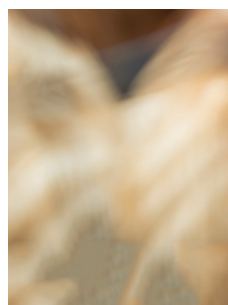
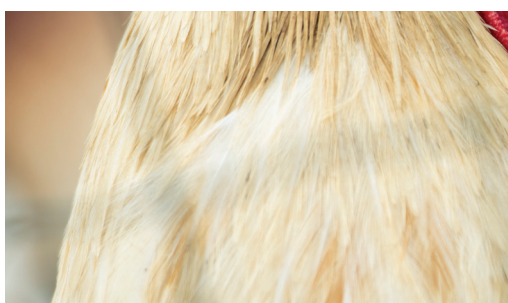
Benefits of using Meat Matrix:

- Automated labelling or bulk labelling with custom designs available in multiple languages
- Accomodates more than 26 different international barcode types including GS1 and 2D QR codes
- Create ASN ready SSCC labels for large retailers
- Integration with current floor scales that have output capability
- Full yield and production control
- Process stock or third-parties
- Dry goods management with full traceability on the factory floor
- Unique serial numbering on all labels
- Third-party storage management
- Full stock management and warehousing capability
- Logistics, distribution, route and truck management
- Price packing
- Traceability from farm/supplier to shelve

“ MATRIX SOFTWARE OFFERS UNIQUE SHOP FLOOR SOLUTIONS TO SOME OF THE BIGGEST BRANDS IN THE INDUSTRY. ”

MEAT MATRIX

POULTRY



In the poultry industry, producers are striving for higher efficiency and cost saving due to the rising labour cost and scarce natural resources. Higher volumes and lower margins require more control of cost, profitability, yields and stock.

Meat Matrix offers solutions that cater specifically to the needs of the poultry industry where factors like stock control, traceability and productivity are essential to regulate. The Matrix Software suite is based on a modular architecture that allows customers to add or exclude modules like third-party storage and logistics.

Meat Matrix integrates with manufacturing equipment used in the poultry industry extracting production data from the likes of Lynco, Marel and many more. This data is presented in multiple formats which adds an extra business intelligence layer to your business.

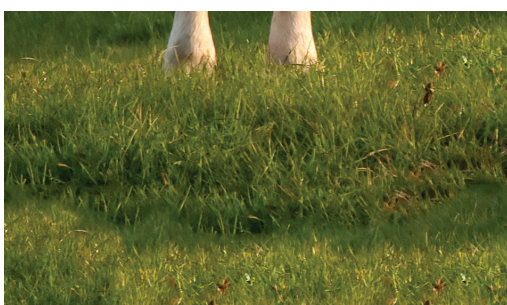
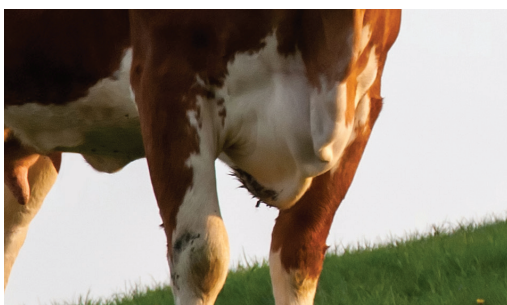
The Meat Matrix solution handles and measures live birds supply, the cut-up process, deboning, high-speed slicing, primary processing, batching, marinating, meat harvesting and other procedures, such as portioning, coating, frying and sausage making.

KEY FEATURES FOR POULTRY PROCESSORS:

- Livestock weighbridge for gross weigh-in integration with kill lines
- Recipe formulation for value added products
- Retail packing, weigh price labelling and OCM
- Stock management
- Dry-stock, packaging and ingredient stock control
- Customisable management dashboards
- A mobile platform for quality control management
- Mobile scanners used for dispatch warehousing and stock transfers
- Sales orders
- Yield control and efficiency

MEAT MATRIX

BEEF



"MEAT MATRIX IS
THE MARKET-LEADING
SUPPLIER OF FACTORY
FLOOR SOFTWARE
SYSTEMS THROUGHOUT
SOUTHERN AFRICA"

Meat Matrix is currently the market-leading supplier of factory floor software systems throughout Southern Africa and is a fully integrated software solution specifically designed for the meat industry. Meat Matrix offers functionality from the very start at the feedlot to the very end at the point of sale retail division.

The Meat Matrix Carcass Management software is currently operating in over 200 meat processing plants around the world including including South Africa, Australia and eight other countries.

This system handles the processing of animals from the kill line grading station to disposal via into-boning, dispatch or write-off.

Benefits of using Meat Matrix:

- Connects to grading devices and weigh control systems
- Enables production planning and decisions
- Provides real-time production information
- Collects all yield information from the slaughter process
- Exports and imports data to other procedures such as payment systems
- Livestock receivables
- Automatic third-party intake into carcass chills
- Integrated weighbridge with in and out tracking
- Mobile quality control templates available on tablets
- Full product traceability from farm to plate
- Carcass dispatch with optional sales order control
- Powerful Reporting
 - Carcass chill loss and slaughter loss, carcass receiving/dispatch, carcass traceability

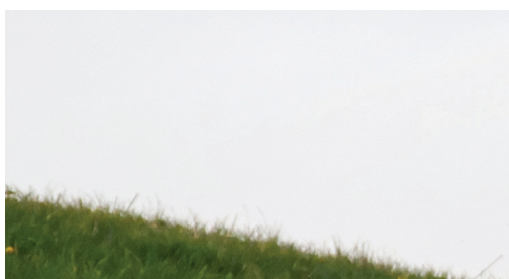
MEAT MATRIX

PORK

Meat Matrix partnered with Lynca Meats, a premium ISO certified pork abattoir and processing facility to develop solutions tailor-made for the pork industry.

Whether your facility accommodates slaughtering and/or final processing of products like bacon, sausages and smoked products - Meat Matrix will give you total yield and cost control at every stage of the process.

As a fully-fledged solution, Meat Matrix handles everything from recipes, stock aging, batch control, packaging and labelling through to offal control and primal cut cost calculations.



KEY FEATURES FOR THE PORK INDUSTRY

- Kill plan and appointments
- Slaughter control
 - Grading and carcass tagging using Hennesy and other grading instruments
- Pre-inspections
 - Quality control documents of animals and transportation
- Pork kill line payments and farmer settlements
 - Flexible cost setup
- Primal packing
 - Weigh and labelling as well as cost calculations
- Offal control
- Stock ageing
- 'What if' calculations
- Grading stations with high-speed weighing equipment
- Unique carcass stock management
- Primal deboning or portion cutting and block test control
- Further processing
 - Sausages, smoking and bacon production
- Retail packing, OCM, weigh price labelling
- Order taking, picking and invoice as well as dispatch
- Quality control & compliance management forms
 - Web-based
- Dry goods, packaging control and material requirement planning
- Business intelligence management dashboards and live KPI reporting
- Third-party accounting and CRM software integration
- Third-party cold store integration

MEAT MATRIX

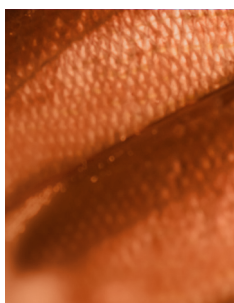
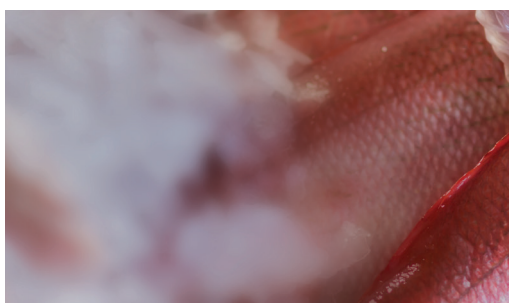
FISH & SEAFOOD

Seafood industry customers expect and demand fresh produce. Meat matrix has full traceability and stock ageing tracking capability.

Meat Matrix handles all stock, pricing, invoicing and reporting within the core modules. This results in more control and access to decision making information.

KEY FEATURES FOR THE SEAFOOD INDUSTRY

- Landings and third-party intakes
- Multi-language labelling
- More than 26 Barcode types GS1, EAN13, QR codes
- Filleting, smoking and portioning
- Yields, giveaway and efficiency reporting
- Bulk and retail packing/labelling
- Sales order picking and dispatch
- Container loading and shipments
- Dry goods and packaging control
- Third-party cold store integration
- Forwards & backwards traceability reporting
- Third-party ERP system integration
- Cooling, smoking and packaging loss
- Pickling input and output gains
- Drip loss curing



MEAT MATRIX

LAMB

Cavalier Foods use Meat Matrix software to process and price products for the largest retail groups in Southern Africa including Woolworths, Pick and Pay and Checkers. These retail groups all benefit from the product/price labelling module that is part of the core Meat Matrix service offering.

Additional functionality in Meat Matrix include slaughter control, grading, carcass tagging, unique carcass stock control and carcass or boxed meat scanning. Our blocktest setup also controls those all-important weight variances that normal accounting and ERP systems lack.

In addition, the software has the built-in functionality to handle cash precious offal processing which adds to the profitability of your business.

KEY FEATURES FOR THE LAMB INDUSTRY

- Security hut inspections
 - Animals and transportation
- Sequencing station
- Lamb kill line payments
- Carcass chill stock management
- Primal deboning or portion cutting
- Primal packing
 - Weighing and labelling
- Warehousing and stock management
- Management dashboards and KPI reporting
- Animal inspection
 - Carcass, offal and hide
- Forwards and backwards traceability reporting
- Third-party ERP system integration
- Production planning and forecasting



06

MEAT PROCESSING

Meat Matrix is the market-leading supplier of factory floor software to value-adding processors in 10 countries. Active in over 220 processing plants around the world, Meat Matrix is designed to cater for both single plant and multi-plant operations.

Meat Matrix processing software offers a complete solution for all sectors of processing, food manufacturing and retail industries. We offer full ingredient traceability, recipe formulation, batch traceability and processing yields.

At Meat Matrix, we create solutions that not only benefits your business, but also delivers more accurate sales and production planning information. Meat Matrix integrates recipe formulation with the production process giving operators on the floor access to recipe information at the press of a button. Auto calculation of recipe ingredient quantities takes the guesswork out of production and puts control in the hands of management.

In a nutshell, your business has the ability to easily determine the most profitable outcome for the stock that you have available. This results in a higher return on investment, higher productivity, reduction in overall waste and an increase in overall revenue.

WITH MEAT MATRIX YOU CAN GAIN CONTROL OVER THE FOLLOWING AREAS

- Mixing loss
 - Filling loss
 - Cooking/smoking
 - Cooling loss
 - Packing loss
 - Pickling input and output gains
 - Drip loss curing
 - Smoking loss
 - Freezing loss
- High risk
 - Slicing/dicing loss
- Bacon packing

KEY FEATURES FOR MEAT PROCESSING

- Purchase order processing
- Supplier intake
- Production planning and forecasting
- Into-production processing
- Bulk and retail packing or labelling
- OCM/Box Packing
 - Weigh labelling
- Cookhouse management
- Blast/tempering chill stock management
- Forwards and backwards traceability reporting
- Finished product stock control
- Container loading and shipments
- Daily production reporting
- Warehousing and stock management
- Sales order picking and dispatch
- Third-party cold store integration
- Carton and pallet labelling stations
- Manual operator or fully automatic stations
- Production order tracking
- Verification scanning
- Work in progress (WIP) tracking stations
- Product specification on floor lookup stations

" MEAT MATRIX IS DESIGNED TO CATER FOR BOTH SINGLE PLANT AND MULTI-PLANT OPERATIONS. "



07

MOBILE TECHNOLOGY

The Meat Matrix Mobile application is setting standards for mobility in inventory and asset management in the most demanding environments from the warehouse floor to the dock door.

The Meat Matrix Mobile application, available on any Android device, was developed to showcase our commitment to helping our clients upgrade to the newest technology as cost effective and seamless as possible.

THE MOBILE COMPUTING TECHNOLOGY YOU NEED TO TAKE PRODUCTIVITY AND ACCURACY TO THE NEXT LEVEL.

MEAT MATRIX MOBILE APPLICATION FUNCTIONALITY

- Inventory/display compliance
- Omni-channel fulfillment
- Inventory management and cycle counts
- Receiving, put-away, reverse logistics
- Picking, staging, packing, shipping
- Process compliance
- Inventory and materials management
- Cross-docking
- Pallet binding

WITH MEAT MATRIX YOU CAN

- Reduce risk of recalls
- Trace products across the value chain
- Incorporate quality assurance registrations
- Provide information to fulfil quality certification requirements



MEAT MATRIX MOBILE AND QUALITY CONTROL

Meat Matrix Mobile ensures that processors can integrate quality control inspection in food processing plants, resulting in flexible registration and reliable data collection. Processors can now monitor quality checkpoints and ensure highly consistent quality assurance.

The quality control application enables you to increase your product quality and value with full traceability as inspections are directly linked to production, raw material sources and final products. Meat Matrix Mobile also handles various inspection items, processes and responses to quality assurance inspection results – all configurable by the user. These inspections include raw material, product and box or pallet inspections.

Main Benefits::

- Monitors product characteristics at any stage of the production process
- Reports on quality specification checks

MEAT MATRIX MOBILE AND TRACEABILITY

Government authorities define traceability as the skill to track any food, feed, food-producing animal or substance that will be used for consumption, through all stages of production, processing and distribution.

Traceability is at the forefront of food safety and is a risk-management tool that allows food processors to withdraw products that have been identified as unsafe, thereby minimising the risk to the public.

Meat Matrix makes it possible to trace every product from source to shelf as the Meat Matrix traceability engine is built into, and records, every process based on individual animal or lots for all production processes from reception to dispatch. This empowers processors to minimise potential recalls.

How does it work:

All units registered in Meat Matrix can be traced one level back and one level forward. The traceability information is based on POs, Goods received Notes ,invoices, trip info and lots. In a processing system, the Meat Matrix traceability function uses POs in the raw material intake and lots in the actual production process. We then use various data collection points to link all these elements together into one traceability chain.

08

SALES & PURCHASES

Meat Matrix manages and speeds up the order cycle. This includes purchase orders, production orders, inventory orders and sales orders. Moreover, Meat Matrix enables processors to eliminate under- and overproduction.

The Meat Matrix despatch module ensures complete support for ordering, invoicing, warehousing and logistics trip planning. Packaging and palletising of orders simplifies the delivery process.

Includes:

- Optimises order management from reception to dispatch
- Plans production capacity and lead time based on raw materials
- Is flexible in responding to changing customer requirements

09

LOGISTICS & WAREHOUSING

With the Meat Matrix dock scheduling software, you have the tools to refine your day-to-day schedule, allowing you to save time and money by decreasing late shipments and detention fees.

This solution offers appointment scheduling for carriers and monitors their status in real time. It also has the ability for inbound co-ordinators to prioritise shipments, refuse carrier requests, or configure prioritisation rules and constraints to automate the scheduling process.

The automated truck/order allocation function in Meat Matrix takes into consideration the trailer type, dock type, special equipment, and product handling unit types. Furthermore, it offers load levelling on the flow of goods to dock resources, appointment audit trails and reporting as well as milestone notification.

| WITH MEAT MATRIX YOU CAN

- Schedule multiple bays
- Manage complex schedules

MEAT MATRIX KNOWS THAT PROCESSORS ARE UNDER CONSTANT PRESSURE TO ACHIEVE EVER-FASTER DELIVERY TIMES AND THAT FAST AND ACCURATE ORDER FULFILMENT IS A CRITICAL PART OF THE LOGISTICS PROCESS

10

EFFICIENT PRODUCTION PLANNING

Production planners need to meet crucial delivery times whilst ensuring accuracy and efficiency throughout the entire production cycle. With Meat Matrix, planners can ensure that raw materials are consumed as effectively as possible in accordance with current order status and current production capabilities.

| KEY FEATURES

- Gain total control over current orders in production
- Assign order lines to processes, manually or automatically
- Generate production orders for multi-step processes
- Provides a more accurate estimate of raw material required to fill orders
- Provides a more accurate estimate of the production capacity available at any given time

| MAIN BENEFITS

- Collects and registers all your weighing data
- Easy to use, centralised label management
- Full integration to inventory and palletising

11

LABELLING SOLUTION

Meat Matrix enables organisations around the world to improve safety, security, efficiency and compliance by creating and automating the printing and control of labels, barcodes, RFID tags and more.

Companies now have the opportunity to produce a wide variety of flexible label designs without the need to create and maintain hundreds of separate documents. Simply send templates, layers and even objects to print based on a single data source, database field or on multiple conditions.

The Meat Matrix Labelling Solution includes password-protect layers to prevent unauthorised edits and the possibility to share global data fields such as incrementing serial numbers among all documents.

- 26 different international barcode types including GS1 and 2D QR codes
- Print-only version available
- Network printing
- Multi-level password protection
- Unicode font support
- Variables (previously known as hidden objects)
- Multilingual support (30 languages)
- 2D barcode support
- Label samples
- Label previews
- Graphical, native and custom barcode support
- Unlimited fields
- Printer code converter
- Print/export to picture or to file
- OLE object support (embedded Word files, Excel files, etc.)
- Counters linked to additional fields Log file support
- Color support
- Import graphic formats (bmp, pcx, jpg, tif, etc.)

12

COMPREHENSIVE AUTOMATION & CONTROL

Meat Matrix enables large enterprises to centrally operate, monitor, manage and secure their printing operations across multiple sites and even continents. Meat Matrix supports permission-based printing, format encryption, job logging and system auditing.



13

OVERVIEW OF ADDITIONAL MEAT MATRIX FEATURES

- Contact Management Tools
- Sales Inventory Inquiry
- Remote Order Entry
- Customer and Volume Pricing
- Point of Sale (POS)
- Electronic Data Interchange (EDI)
- Batch Product Transfers
- Purchase Order Miscellaneous Charges (POMC)
- Inventory Control
- Warehouse and Freezer control
- Traceability
- Country of Origin Labelling (COOL)
- Import Tracking
- By-Product Costing, Tracking and Production
- Bar Code Printing, Scanning and Inventory Control
- Physical Inventory Verification
- Production Processing
- Portion Control
- Catch Weight Processing
- Lot / Yield Management
- Production Packing Stations
- Enhanced Production Quality Control
- Barcoding for Accurate Quality Checks and Cost Tracking
- Materials Requirements Planning (MRP)
- Batch Recipe Management
- Purchase Order Processing
- Costing and Pricing
- Scale Interface
- Touch Screen PC Support
- Dispatch / Delivery
- Truck Route / Manifest
- Business Intelligence (BI)

OUR CUSTOMERS



15

OUR SOFTWARE INTEGRATE WITH:

